

# User Manual

---

Advantech OSD Utility

<b>Copyright.....</b>	<b>3</b>
<b>Features in OSD Utility .....</b>	<b>4</b>
<b>Limitation .....</b>	<b>4</b>
<b>General Settings Page .....</b>	<b>6</b>
<b>Color Settings Page.....</b>	<b>8</b>
<b>Advanced Settings Page .....</b>	<b>10</b>
<b>Information Page.....</b>	<b>12</b>

## Copyright

The documentation and the software included with this product are copyrighted 2021 by Advantech Co., Ltd. All rights are reserved. Advantech Co., Ltd. reserves the right to make improvements in the products described in this manual at any time without notice. No part of this manual may be reproduced, copied, translated or transmitted in any form or by any means without the prior written permission of Advantech Co., Ltd. Information provided in this manual is intended to be accurate and reliable. However, Advantech Co., Ltd. assumes no responsibility for its use, nor for any infringements of the rights of third parties, which may result from its use.

Edition 1  
April 2021

## Features in OSD Utility

This section outlines the features that are provided in OSD utility. The utility provides basic **On-Screen Display** functions, including **general settings**, **color settings**, **advanced settings** and the **information** regarding to the utility.

## Limitation

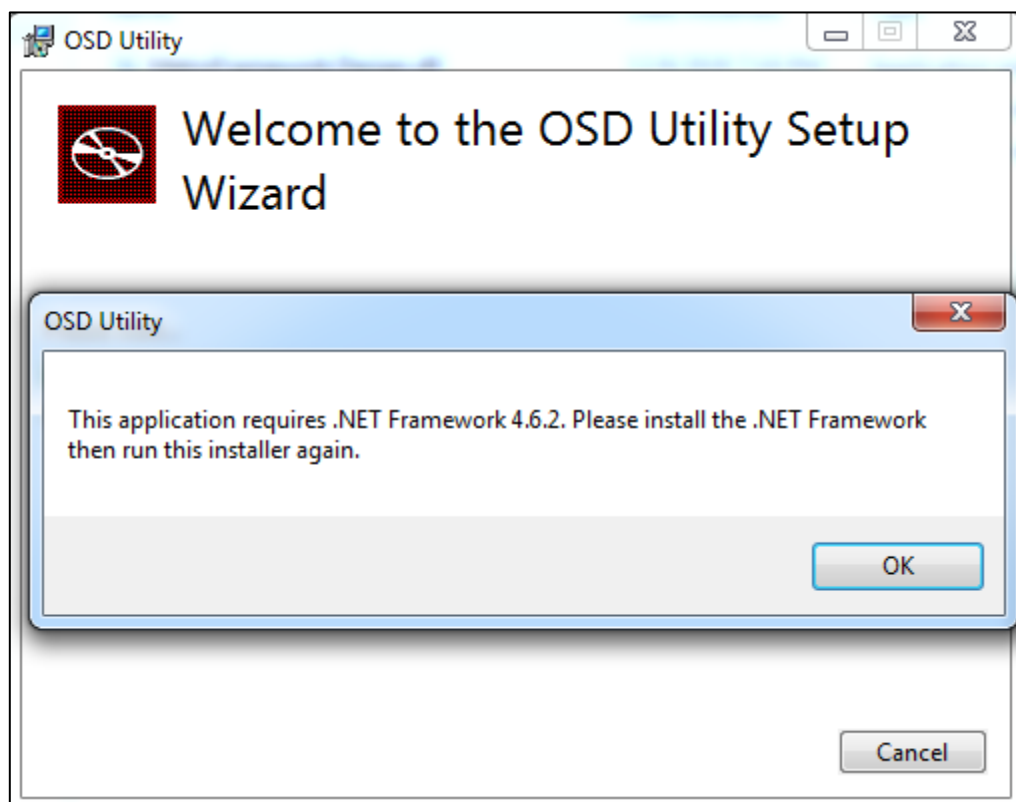
The utility supports **FPM-200** series, including the following products:

- FPM-212
- FPM-215
- FPM-217
- FPM-219

The utility only supports the following **Windows** operating systems:

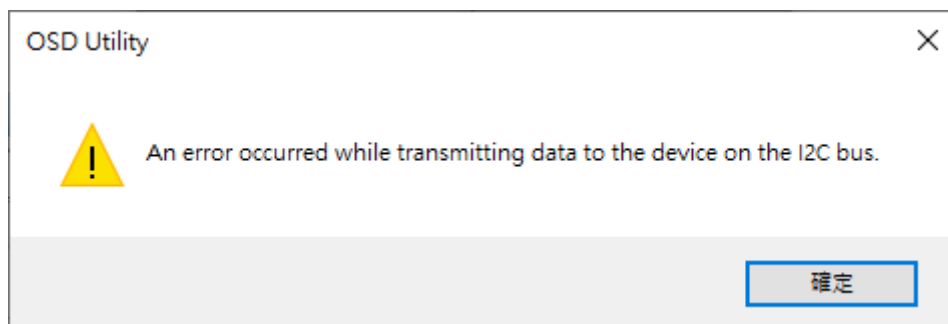
- Windows 10 x86 / x64
- Windows 7 x86 / x64

Please make sure that **.NET Framework** package (version **4.6.2** or higher version) is installed in advance, if not, then the following message will be displayed during installation.

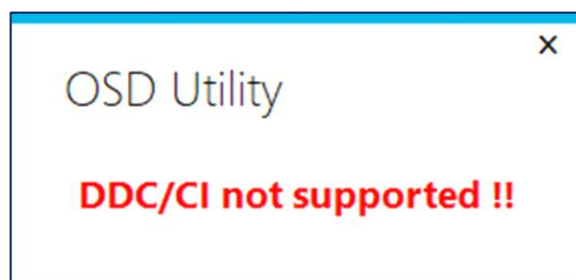


※ **WARNING!** If the target monitor (or monitors) does not conform to the specifications of both **DDC/CI** (Display Data Channel / Command Interface) standard and **MCCS** (Monitor Control

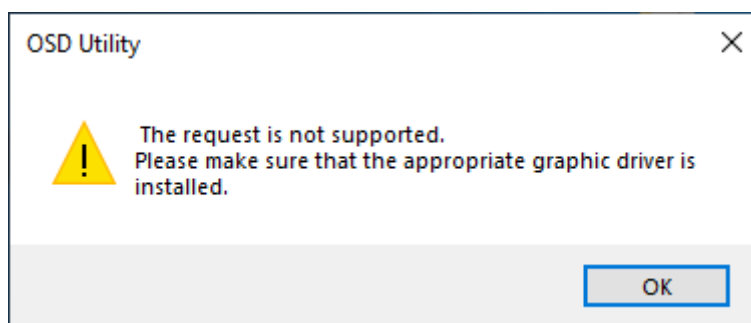
Command Set), the following error message will be displayed during initialization.



Finally, the GUI of the utility will show as below. Please make sure that the specifications are met for the utility to be functional.



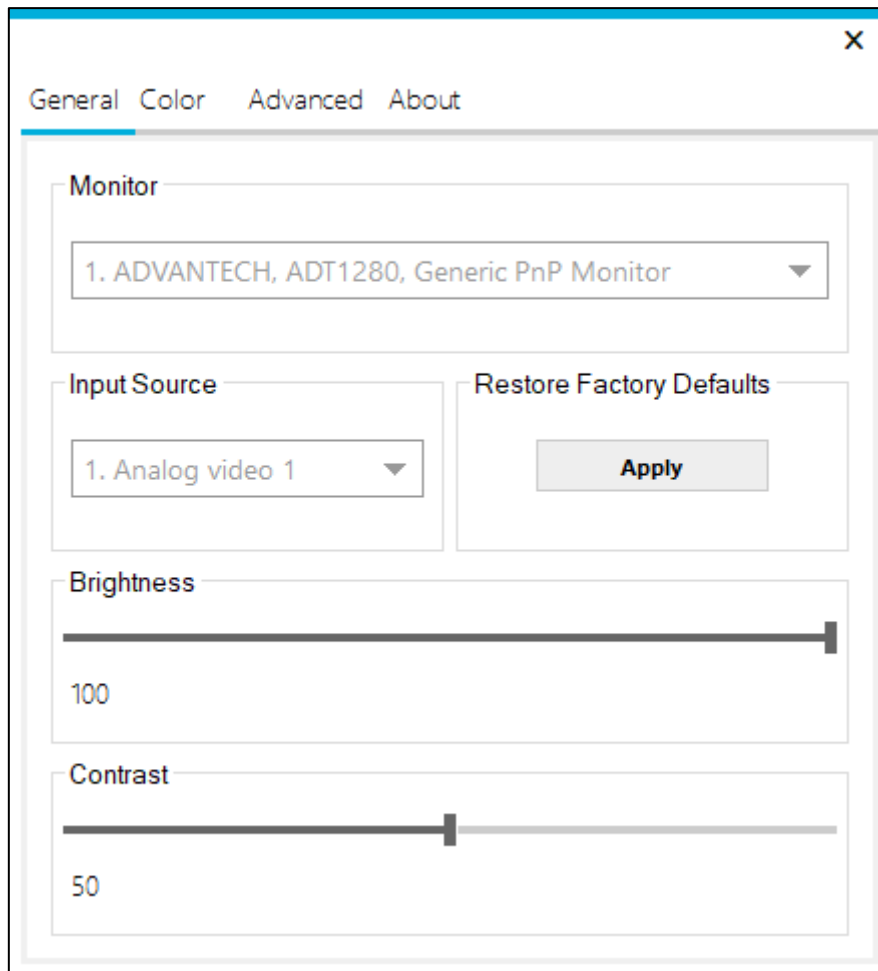
- ※ **WARNING!** The host device also requires the **appropriate graphic driver** for OSD utility to be fully operational; otherwise, the following error message will be displayed during initialization.



- ※ **WARNING!** The utility does not support manipulation to **a same monitor** over **multiple devices** at the **same time**.
- ※ **WARNING!** The utility does not support "**Hot Plug Detect**". If a new input source is plugged in or an existing source is unplugged during runtime, please restart the utility to get the available input sources again.

## General Settings Page

This page provides the following functions, including **monitor** selecting, **input source** selecting, **brightness level** adjustment, **contrast level** adjustment and **factory defaults** restoring.

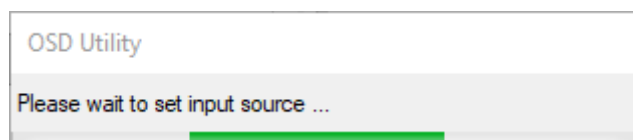


### 1. **Monitor**

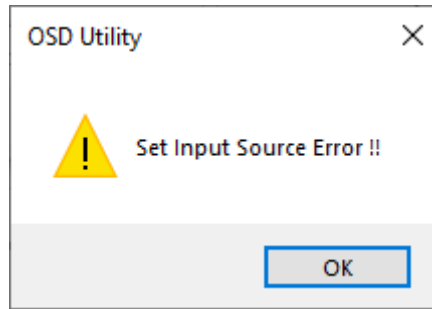
Select the connected monitor.

### 2. **Input Source**

Select the input source of the monitor, ex. VGA, HDMI, this process takes about 5 seconds to complete, and the following GUI will be displayed during setting.



If the selected input source does not exist (not connected to the monitor or the source is unavailable to control), the following error message will be displayed.



**Note:**

If the desired input source is not available, the firmware will automatically switch the source to an **available** source.

3. **Brightness**

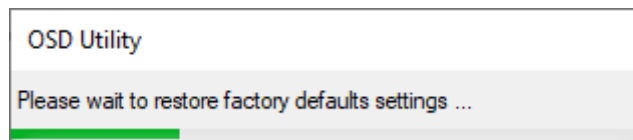
Control the level of brightness using scroll bar.

4. **Contrast**

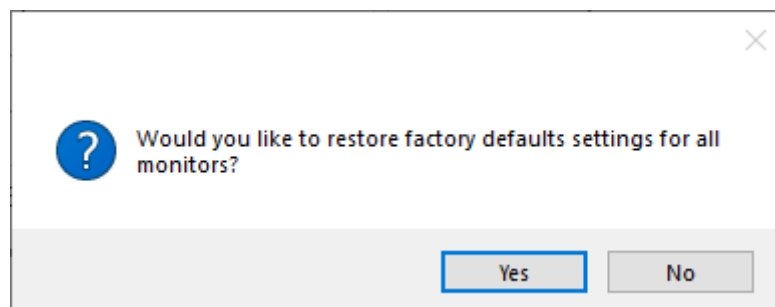
Control the level of contrast using scroll bar.

5. **Restore Factory Defaults**

Restore all settings to factory default values, this process takes about 5 seconds to complete, and the following GUI will be displayed during restoring.

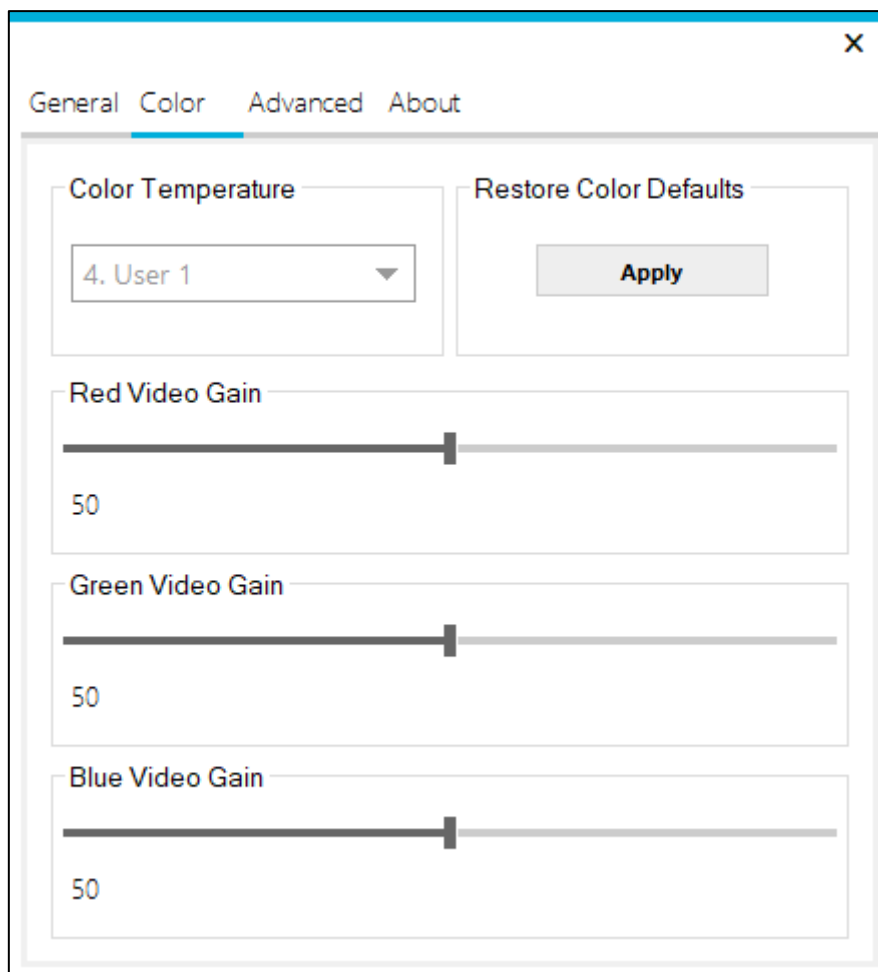


When exiting the program, the following message box will be displayed to ask user if current settings should be kept or restore the default settings for the monitor (or all monitors if connected), click **yes** to restore the monitor (or monitors) to default settings, click **no** to keep the current settings for the monitor (or monitors).



## Color Settings Page

This page provides the following functions, including **color temperature** selecting, **color defaults** restoring, **red video gain level** adjustment, **green video gain level** adjustment and **blue video gain level** adjustment.

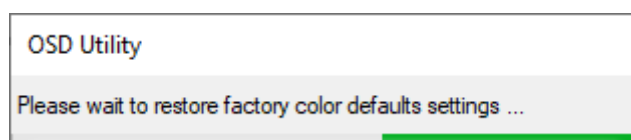


### 1. Color Temperature

Select the color temperature for the monitor, ex. 6500K, 9300K, user n (user defined color temperature, n = 1~3) and eye protection mode (reduction of blue video gain).

### 2. Restore Color Defaults

Restore **brightness** level, **contrast** level and **user-defined RGB** colors to factory default values, this process takes about 5 seconds to complete, and the following GUI will be displayed during restoring.



### 3. Red Video Gain

Control the level of red video gain using scroll bar.

#### **Note:**

This function is only available for **user-defined** color temperature.



#### 4. Green Video Gain

Control the level of green video gain using scroll bar.

**Note:**

This function is only available for **user-defined** color temperature.

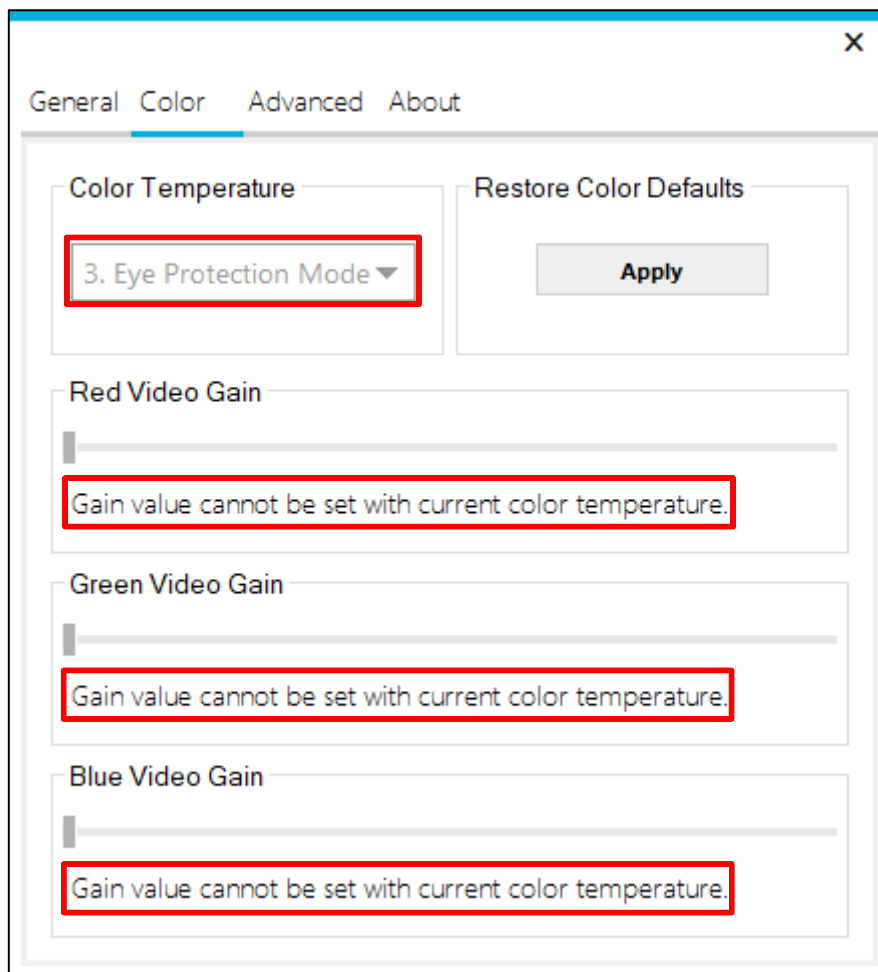
#### 5. Blue Video Gain

Control the level of blue video gain using scroll bar.

**Note:**

This function is only available for **user-defined** color temperature.

The following GUI is an example when the **user-defined** option is not selected for the color temperature setting, making red, green and blue video gains functions disabled.

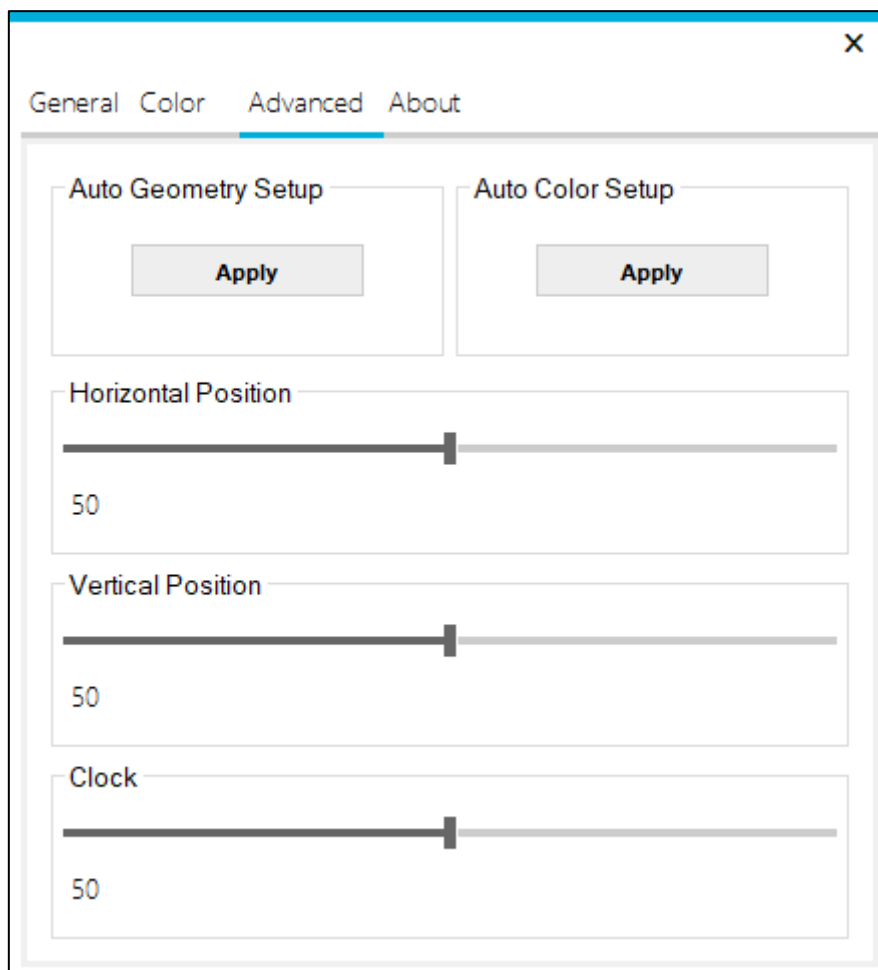


## Advanced Settings Page

This page provides the following functions, including **auto geometry setup**, **auto color setup**, **horizontal position** adjustment, **vertical position** adjustment and **clock** level adjustment.

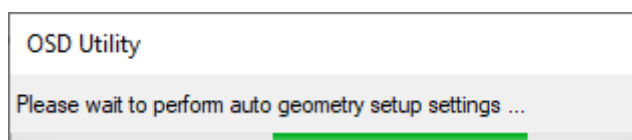
**Note:**

These functions are only available for **analog** input source, ex. VGA.



### 1. Auto Geometry Setup

Auto adjust the values of **horizontal position**, **vertical position** and **clock level**, this process takes about 5 seconds to complete, and the following GUI will be displayed during setting.



### 2. Auto Color Setup

Perform analog auto color setup.

### 3. Horizontal Position

Control the level of horizontal position using scroll bar.

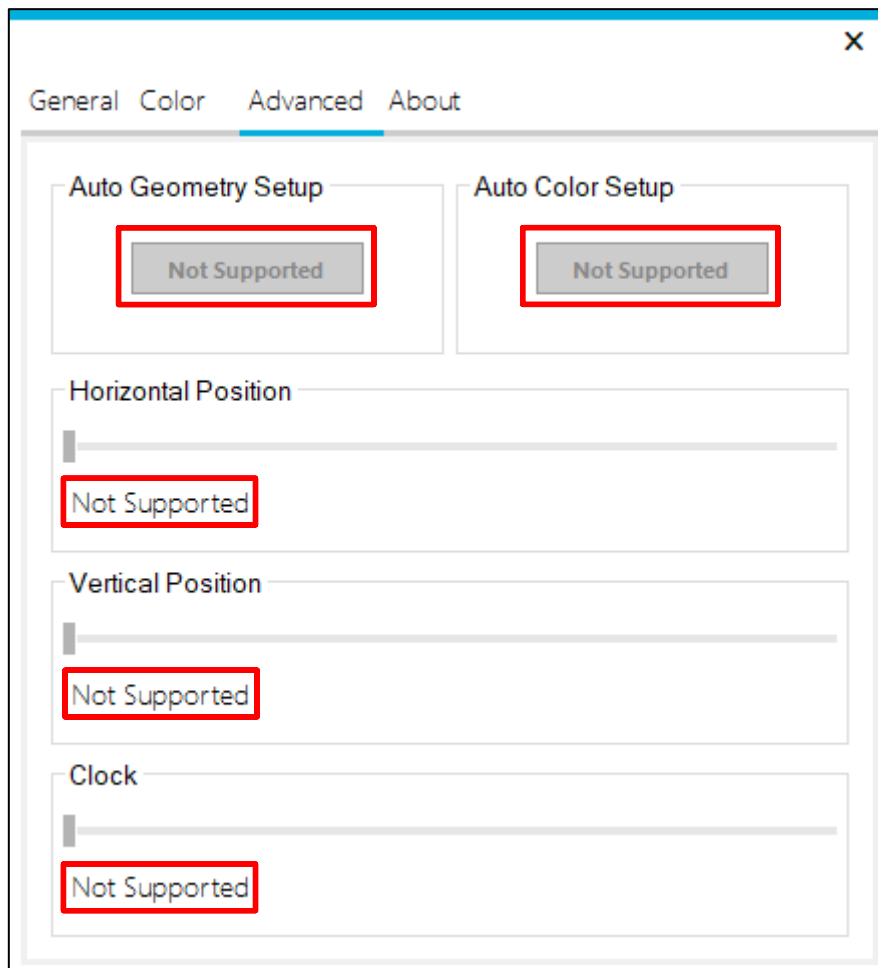
### 4. Vertical Position

Control the level of vertical position using scroll bar.

## 5. **Clock**

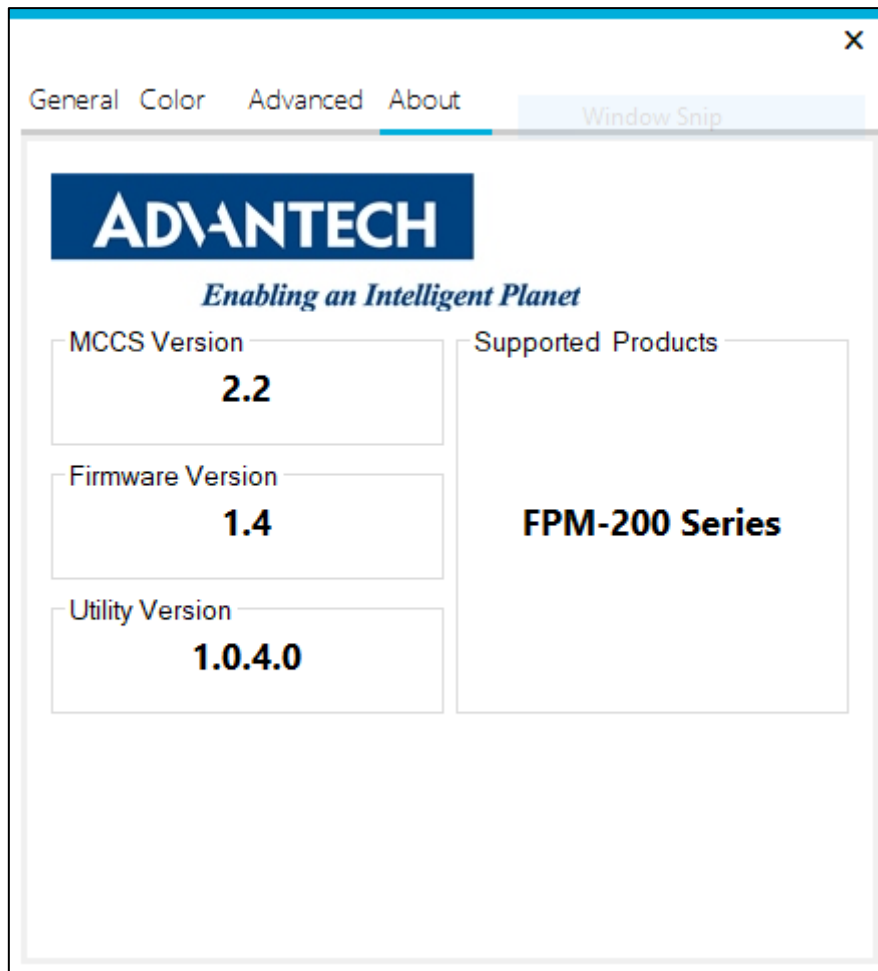
Control the level of clock using scroll bar.

The following GUI is an example when the selected input source is not an **analog type** source, making the functions as described above unable to control.



## Information Page

This page shows the **OSD firmware** version, **MCCS** (Monitor Control Command Set) version, **utility** version and the **FPM products** that are currently supported.





*Enabling an Intelligent Planet*

**[www.advantech.com](http://www.advantech.com)**

**Please verify specifications before quoting. This guide is intended for reference purposes only.**

**All product specifications are subject to change without notice.**

**No part of this publication may be reproduced in any form or by any means, electronic, photocopying, recording or otherwise, without prior written permission of the publisher.**

**All brand and product names are trademarks or registered trademarks of their respective companies.**

**© Advantech Co., Ltd. 2021**